

USASPEC

BT45-VETTE

GM with XM

the newly engineered innovative
Bluetooth® music & phone interface

Product Manual

www.usaspec.com
167 Mason Way, A-2
City of Industry, CA 91746

TABLE OF CONTENTS

Product Overview	1
Notice	1
Installation & Operation Precautions.....	1
BT45-VETTE Package Content	2
Compatibility Information	
Bluetooth Device Compatibility	2
Device Compatibility for Music Info Display.....	2
Vehicle Compatibility & Satellite Radio Receiver Location .	3
Radio Types & Dip Switch Settings.....	5
Installation	
Installation Instruction	7
Diagram A: Cable Connection	8
Diagram B: Recommended Microphone Locations	8
Bluetooth Setup	
Bluetooth Device Pairing Instructions	9
Switching Audio Source: from AM/FM, CD, to Bluetooth Source	9
Media Streaming	10
Music Playback Control	10
Phone Calls.....	11
Answer and End Calls	11
Make Calls.....	12
Hands-free to Handset.....	12
Enable & Disable Voice Prompt.....	13
AUX PORT	13
USB Charging Port.....	13
Type A Radio Preset Relabeling (Optional).....	14
Type B Radio Preset Relabeling (Optional).....	16
FAQs & Troubleshooting Topics	18
Limited Warranty	19

PRODUCT OVERVIEW

The BT45 seamlessly integrates your vehicle's OEM sound system with Bluetooth (HFP) devices for **hands-free phone calls and media streaming**. You can wirelessly connect your A2DP Bluetooth profile equipped smartphone or tablet to play stored music or stream the audio from your favorite media apps such as, iHeart Radio, Pandora, Spotify, and YouTube. The built in **echo & noise cancellation** feature will give you **crystal clear sound quality** on your hands free phone calls. The **all-speaker playback** feature will give you a **rich & dynamic music streaming quality**. The BT45 has an additional **3.5 mm auxiliary audio port and a USB charging port** so you can play music stored in your non-Bluetooth devices and keep your device charged and ready to go. The BT45's **plug & play technology** takes advantage of the OEM radio's ability to accept an external CD changer or Satellite Radio by converting it into Bluetooth phone/audio streaming/AUX input source. This design innovation allows you to **maintain functionality of existing factory installed options** such as, OnStar Navigation, CD changer, Satellite radio, RSE (rear seat entertainment system), and AUX/USB input.

NOTICE

USA SPEC solely distributes its products through authorized dealers in order to ensure its customers receive proper services and information from the dealers. USA SPEC reserves the right to only offer technical support or warranty services for products purchased through authorized USA SPEC dealers. Please refer to our website www.usaspec.com for a list of authorized dealers.

INSTALLATION & OPERATION PRECAUTIONS

- DO read the entire manual before starting the installation. We recommend that the BT45 be installed by a qualified professional since **all installations will require the removal of some parts of the vehicle such as dashboard, backseat, etc.**
- DO install the interface securely using Velcro or wire ties (not included) and keep away from any moving parts such as the gas pedal.
- DO NOT open, disassemble, or modify the BT45 in any way. Such attempts will void the warranty on the product.
- DO NOT expose the interface to extreme temperature, humidity, or direct sunlight.
- DO NOT operate the Bluetooth device while driving. Always give full attention to the road while driving.

BT45-VETTE PACKAGE CONTENT

- 1 Product Manual
- 1 BT45-VETTE module
- 1 BT-VETTE cable
- 1 MIC45 microphone

COMPATIBILITY INFORMATION

Bluetooth Device Compatibility

BT45 is compatible with most Bluetooth wireless technology enabled devices currently on the market such as iPhone, iPad, iPod Touch, Android smartphones & tablets, Windows smartphones & tablets, and Blackberry. **Devices must have Bluetooth profile A2DP (Advanced Audio Distribution Profile) and AVRCP (Audio/Video Remote Control Profile) 1.4 or higher for audio streaming and text display.**

Note: Due to the difference in Bluetooth technology, some Bluetooth enabled devices may be incompatible or may not support all of BT45's features.

Device Compatibility for Music Info Display

The display of artist, album, and song title information on the radio is determined by the following 3 factors

1. Your device's (smartphone) operating system: iOS 6 or higher, Android 4.0 (Ice Cream Sandwich) or higher
2. Your device's Bluetooth profile: AVRCP 1.4 or higher
3. Music/media app: text display capabilities of music/media streaming apps can vary thus some might not display properly on your radio

Vehicle Compatibility & Satellite Radio Receiver Location

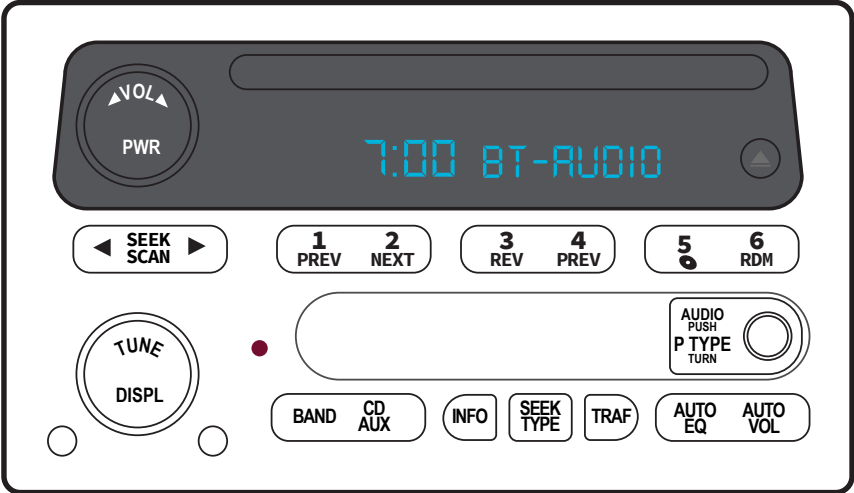
MAKE	MODEL ⁽¹⁾	YEAR	XM (SAT Radio) Receiver Location ⁽²⁾
CADILLAC	Escalade	03 - 06	Behind the glove box
	Escalade EXT	03 - 06	Behind the glove box
	CTS	04 - 07	Under the rear deck
	SRX	04 - 07	Behind the passenger side rear quarter panel
CHEVROLET	Avalanche	03 - 06	Behind the glove box
	Blazer	2004	
	Corvette Coupe	05 - 11	Between the seats/waterfall
	Corvette Convertible	05 - 11	Behind the logo
	Equinox	05 - 06	Behind the driver side quarter panel in the trunk
	Impala	00 - 05	Behind the passenger side quarter panel in the trunk
	Monte Carlo	00 - 05	Behind the passenger side quarter panel in the trunk
	S10 Truck	2004	
	Silverado	03 - 06	Behind the glove box
	Silverado Classic	2007	Behind the glove box
	SSR	05 - 06	
	Suburban	03 - 06	Behind the glove box
	Tahoe	03 - 06	Behind the glove box
	Trail Blazer ⁽³⁾	04 - 09	Behind the glove box

- (1) All radios must have a "BAND" button and an XM (SAT radio) receiver
- (2) Vehicles without a XM receiver must use the BT45-GM15 package
- (3) The XM receiver must be disconnect

MAKE	MODEL ⁽¹⁾	YEAR	XM (SAT Radio) Receiver Location ⁽²⁾
GMC	Denali	03 - 06	Behind the glove box
	Envoy ⁽³⁾	04 - 08	Underneath the glove box
	Sierra	03 - 06	Behind the glove box
	Sierra Classic	2007	Behind the glove box
	Yukon	03 - 06	Behind the glove box
HUMMER	H1	04 - 06	Inside the glove box, in the passenger side dash compartment
	H2/SUT	03 - 07	Inside the glove box, in the passenger side dash compartment
	H3 ⁽³⁾	07	Inside the glove box, in the passenger side dash compartment
<p>(1) All radios must have a "BAND" button and an XM (SAT radio) receiver</p> <p>(2) Vehicles without a XM receiver must use the BT45-GM15 package</p> <p>(3) The XM receiver must be disconnect</p>			

RADIO TYPES & DIP SWITCH SETTINGS

1. Determine your radio type by using the images below as reference.
 2. Set the dip switches according to your radio type.
- Dip switch ON = DOWN; OFF = UP

Radio Type	Dip Switch Setting
<p>ALL Non-Navigation Radios</p> 	<p>1-ON, 2-OFF, 3-OFF, 4-ON</p>

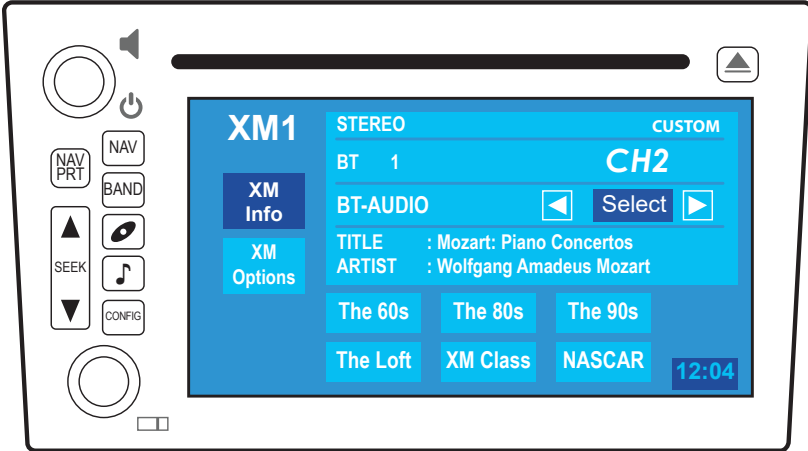
Radio Type

Dip Switch Setting

TYPE A Navigation Radios

1-ON, 2-OFF, 3-OFF, 4-OFF

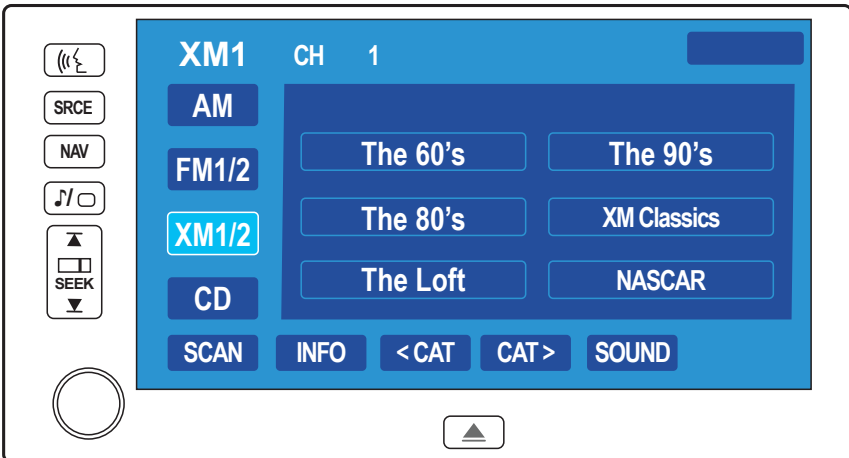
- TYPE A radios are found in Chevy & GMC vehicles
- See p.14-15 for optional preset relabeling steps



TYPE B Navigation Radios

1-ON, 2-ON, 3-OFF, 4-OFF

- TYPE B radios are found in Corvette, CTS, and RSX
- See p. 16-17 for optional preset relabeling steps



INSTALLATION

Installation Instruction

- We recommend that the BT45 be installed by a qualified professional since all installation will require the removal of some parts of the vehicle such as dashboard, backseat, etc.

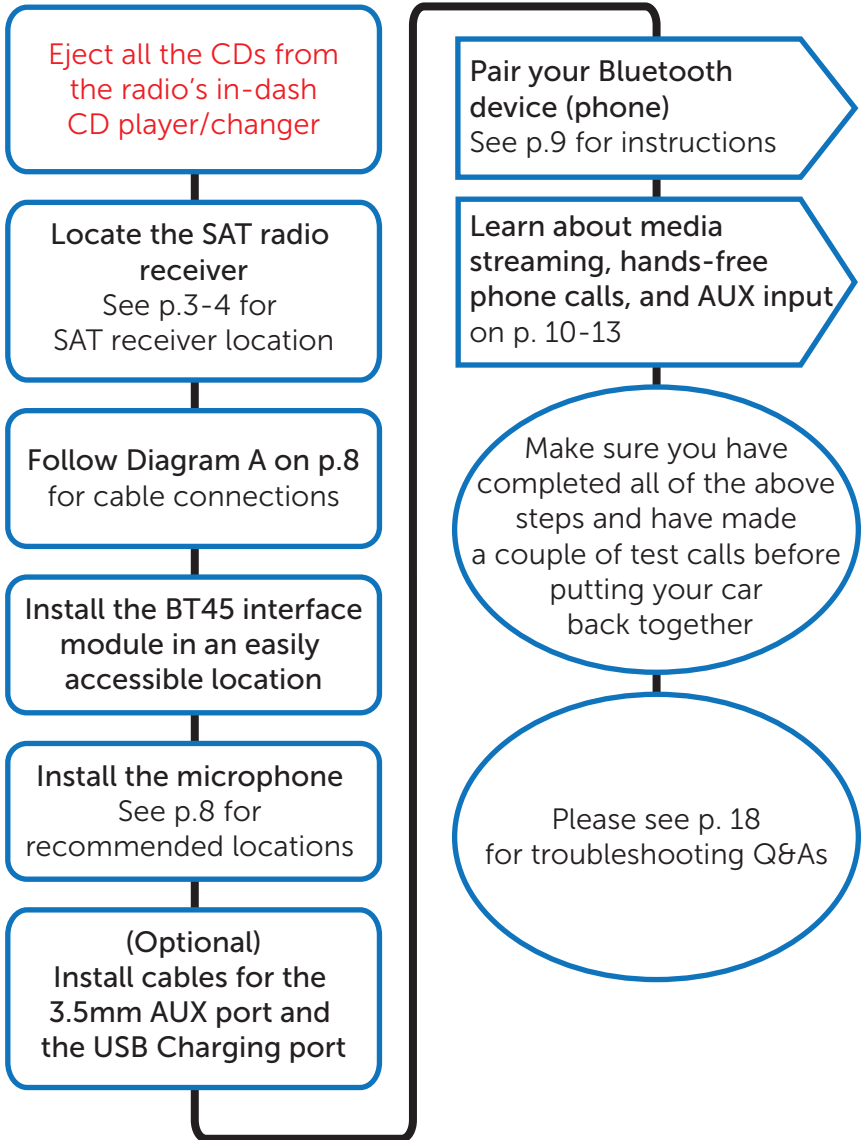
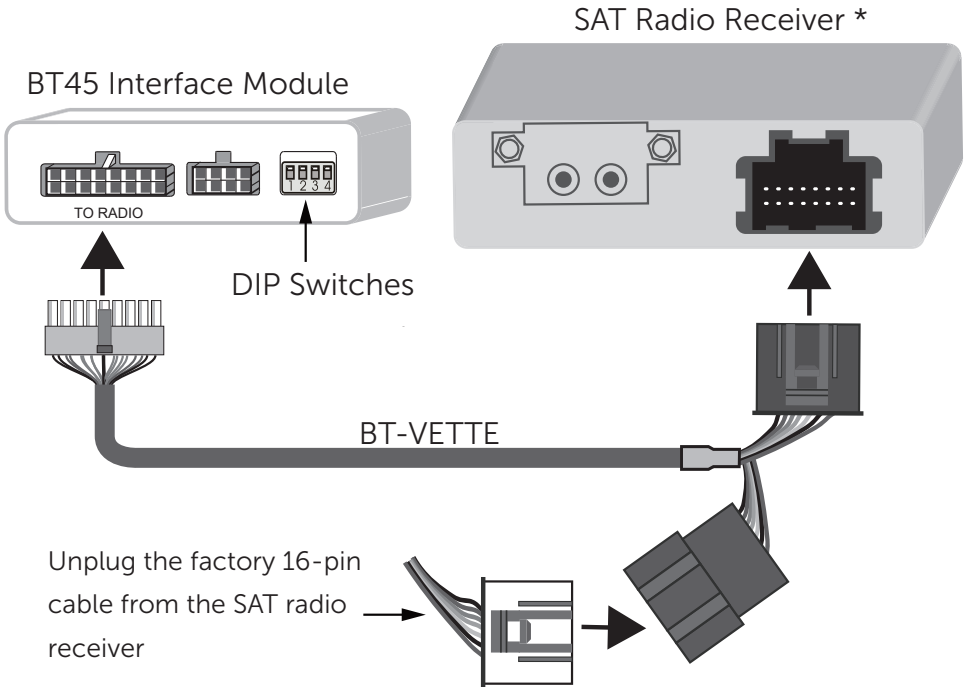
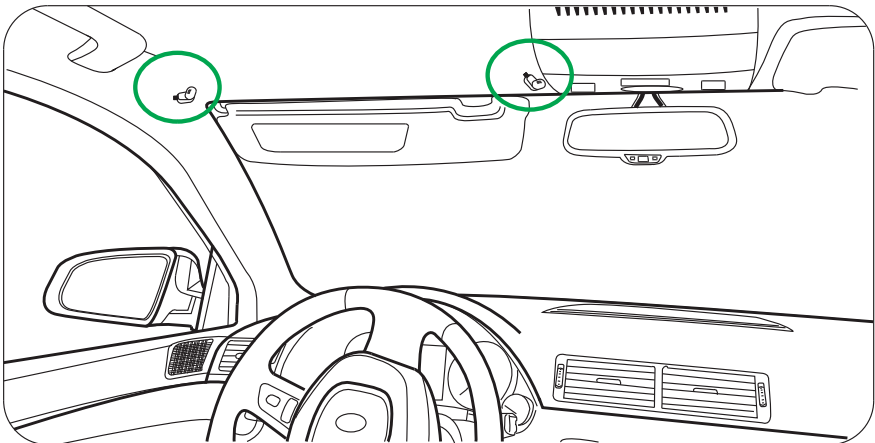


Diagram A: Cable Connection



* The above depiction of the SAT radio receiver is a generalized depiction, the receiver in your vehicle will look similar but not exactly the same.

Diagram B: Recommended Microphone Locations



BLUETOOTH SETUP

Bluetooth Device Pairing Instructions

1. Turn your vehicle's ignition ON and make sure the radio is turned on
2. Press the "BAND" or the "SRCE" button until the radio switches into XM1 audio source
3. The radio will display "BT45 #####-####"
4. Enable the Bluetooth function on your device (phone)
5. Scan/search for available device from your phone. It may take up to 30 seconds for your phone to locate the BT45
6. Select BT45-GM from the list of available devices your phone has detected.
7. Allow the pairing process to take place
8. Once pairing is complete you will hear the "CONNECTED" voice prompt from your vehicles' audio system and the radio will briefly display the name of your phone, i.e. USA SPEC TEST PHONE
9. If your device asks for pairing pin number, then enter: 1234

Switching Audio Source: from AM/FM, CD, to Bluetooth Source

1. Press the "XM 1/2" soft-key from your vehicle's navigation screen or press the "BAND" or "SRCE" button to cycle through the audio sources until you reach XM1
2. Once the BT45 is connected, XM1 will become the Bluetooth audio source and XM2 will still remain as XM radio presets.

MEDIA STREAMING

- If you have music stored in your device, it will begin to play right after the "CONNECTED" voice prompt. If playback does not start automatically, turn the radio TUNE knob to the right (TUNE UP). You can also proceed to manually start playback on your device from your preferred media app such as Pandora, YouTube, or Podcast app.
- While your music is playing press the "INFO" or "DISPLAY" button to cycle through the different text fields such as artist, album, and song title. The default display is channel number or song title
- The BT45 will assign track numbers to the currently playing audio tracks if your radio is unable to display music info due to device's compatibility (see p.2 for details).

Music Playback Control

Next & Previous Track

1. **From the radio:** turn the TUNE knob or the SEEK UP/DOWN button
2. **From the steering wheel:** press the SEEK UP/DOWN button

Pause & Play

3. Pause the media streaming directly from your device (phone)
4. Radio display will say [PAUSED]
5. To resume streaming: turn the radio TUNE knob to the right or press the SEEK UP button from the radio or the steering wheel

Volume Up/Down

6. From your device (phone) set the volume to MAX
7. Use the volume control on the radio or the steering wheel to adjust the streaming volume to the desired level

PHONE CALLS

Answer and End Calls

When there is an incoming call:

1. You must manually switch to Bluetooth audio source (XM1) first
2. Once you are in the Bluetooth source (XM1), you will hear the caller's number announced through the vehicle's sound system (you will hear "PRIVATE" if caller ID is not available). If the voice prompt features is disabled, then you will only hear the phone's ringtone. See p.13 on how to enable/disable the voice prompt feature.

Answer Calls

3. From the radio: turn the **TUNE knob** to the **right** or press the **SEEK UP** button
 4. From the steering wheel: press **SEEK UP** button
- **NOTE: if a call comes in while you are in XM2 you must manually switch to XM1 first**

End or Reject Calls

5. From the radio: turn the **TUNE knob** to the **left** or press the **SEEK DOWN** button
6. From the steering wheel: press the **SEEK DOWN** button
7. Once a call has ended, the radio will remain in the Bluetooth source (XM1), you must manually select the source you wish to go back to.

Make Calls

1. Make sure you are in the Bluetooth audio source (XM1)
2. Dial calls directly from your phone
3. OR use your phone to engage its voice dialing function such as Siri, OK Google, and Cortana. Once engaged, your voice command will be picked up by the BT45's microphone ⁽¹⁾.
4. Turn the TUNE knob to the left or press the SEEK DOWN button to end the call

(1) Please keep in mind that the environment inside a moving vehicle tends to be noisier than your average environment. This will affect how accurately your phone's voice recognition function such as Siri picks up your voice command.

Hands-free to Handset

Transferring an active call from hands-free to Handset

1. **While on a call**, turn the TUNE knob to the right to transfer the call from hands-free to handset
2. Turn the same knob to the right again to transfer the call back to hands-free mode

ENABLE & DISABLE VOICE PROMPT

1. Turn your vehicle's ignition ON
2. Go to Bluetooth source (XM1)
3. Disable the Bluetooth function from your phone's setting
4. Wait 5 seconds, then turn the TUNE knob to the right to ENABLE. Turn the same knob to the left to DISABLE
5. Enable your phone's Bluetooth function and reconnect to the BT45. The feature will stay disabled or enabled until you perform the above steps again.
 - The above steps will enable/disable both the voice prompt and the caller # announcement features

AUX PORT

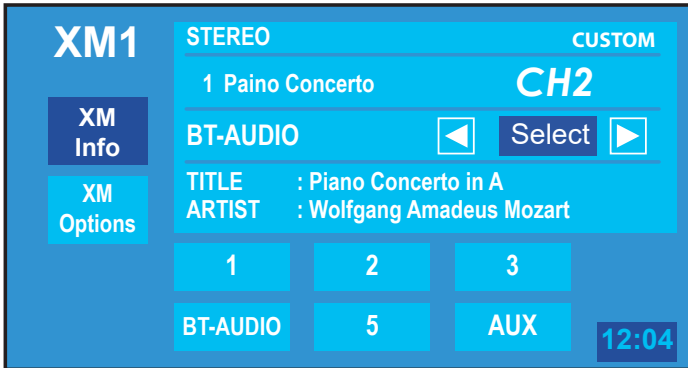
1. You will need a 3.5mm to headphone jack cable (not included in this package)
2. Go to XM1 then press PRESET 6 to access the audio device connected to the AUX port
3. Press PRESET 4 to switch back to Bluetooth audio source
 - Remember to turn the volume from the audio device to MAX first then use the radio/steering wheel's volume control to adjust to the desired level

USB CHARGING PORT

- USB charging cable is not included in this package
- Maximum charging output: 2.1 amps at 5 volt

TYPE A RADIO PRESET RELABELING (OPTIONAL)

- The programming steps below are optional. It will relabel the six XM1 presets to make it easier to switch between BT45 Bluetooth audio and AUX input. See image below for example of radio screen with relabeled presets.

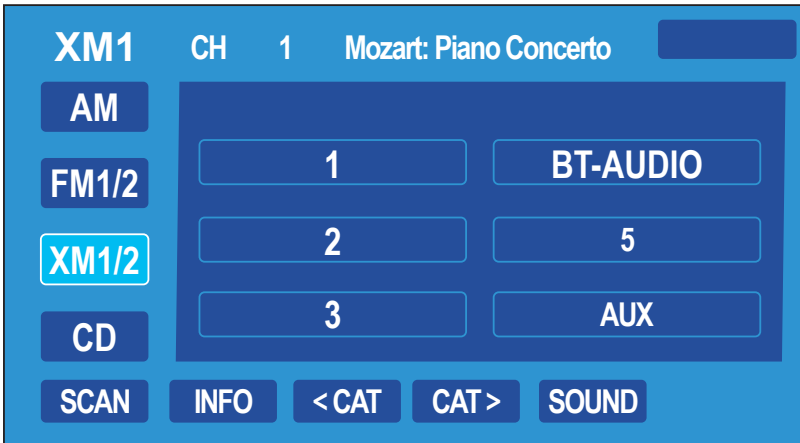


1. Turn your vehicle's ignition OFF
2. Disconnect the BT45 module from the BT-VETTE cable
- 3. Set dip switch 1 to OFF (UP) position**
4. Reconnect the BT45 module, turn the vehicle key to the ON position and make sure the radio is TURN ON
5. Switch to XM1
6. Press & hold the SEEK UP button until it beeps, "1" will appear on the top of the radio screen
7. Press & hold PRESET #1 until it beeps; preset #1 will change to 1.
8. Press the SEEK UP button, "2" will appear on the screen.
9. Press & hold PRESET #2 until it beeps; preset #2 will change to 2.
10. Press the SEEK UP button, "3" will appear on the screen
11. Press & hold PRESET #3 until it beeps; preset #3 will change to 3.

12. Press the SEEK UP button, "BT-AUDIO" will appear on the screen.
13. Press & hold PRESET #4 until it beeps; preset #4 will change to BT-AUDIO.
14. Press the SEEK UP button, "5" will appear on the screen.
15. Press & hold PRESET #5 until it beeps; Preset #5 will change to 5.
16. Press the SEEK UP button, "AUX" will appear on the screen.
17. Press & hold PRESET #6; preset #6 will change to AUX.
18. Turn the vehicle ignition OFF
19. Disconnect the BT45 module and **set dip switch 1 to ON (DOWN) position**
20. Reconnect the BT45 module and turn the vehicle key to the ON position
21. Switch to Bluetooth audio source (XM1)
22. Your radio screen should resemble the image on p.15.
23. PRESET AUX will give you access to the audio device connected to the BT45 module's AUX port.

TYPE B RADIO PRESET RELABELING (OPTIONAL)

- The programming steps below are optional. It will relabel the six XM1 presets to make it easier to switch between BT45 Bluetooth audio and AUX input. See image below for example of radio screen with relabeled presets.
-



1. Turn your vehicle's ignition OFF
2. Disconnect the BT45 module from the BT-VETTE cable
- 3. Set dip switch 1 to OFF (UP) position**
4. Reconnect the BT45 module, turn the vehicle key to the ON position and make sure the radio is TURN ON
5. Switch to XM1
6. Press & hold the SCAN button until you see "1" appear on the top of the radio display
7. Press & hold PRESET #1 until it beeps; preset #1 will change to 1.
8. Press the SEEK UP button, "2" will appear on the radio screen.

9. Press & hold PRESET #2 until it beeps; preset #2 will change to 2
10. Press the SEEK UP button, "3" will appear on the screen.
11. Press & hold PRESET #3; preset #3 will change to 3.
12. Press the SEEK UP button, "BT-AUDIO" will appear on the screen.
13. Press & hold PRESET #4 until it beeps; preset #4 will change to BT-AUDIO
14. Press the SEEK UP button, "5" will appear on the screen.
15. Press & hold PRESET #5; preset #5 will change to 5.
16. Press the SEEK UP button, "AUX" will appear on the screen.
17. Press & hold PRESET #6; preset #6 will change to AUX.
18. Turn the vehicle ignition OFF
19. Disconnect the BT45 module and **set dip switch 1 ON (DOWN) position**
20. Reconnect the BT45 module and turn the vehicle key to the ON position
21. Switch to Bluetooth audio source (XM1)
22. Your radio screen should resemble the image on p.16
23. PRESET AUX will give you access to the audio device connected to the BT45 module's AUX port.

FAQS & TROUBLESHOOTING TOPICS

- **My hands-free phone call volume is very low.**
First adjust volume on your phone to MAX then use the radio volume controls to adjust to the desired level.
- **I'm unable to pair my smartphone/device.**
 1. Delete/forget the BT45 from your phone's Bluetooth setting. Reset your phone and try the pairing process again.
 2. If you have an Android device, make sure the "Only visible to paired devices" option is UNCHECKED. Sometimes it can take up to 30 seconds for the BT45 to be detected by your smartphone/device.
- **My radio is not displaying any music info such as song titles.**
Confirm that your device is equipped with Bluetooth profile AVRCP 1.4 or higher, it has iOS 6.0 or higher, or Android 4.0 or higher.
Music streaming apps' info display capabilities vary thus some might not display properly on your radio.
- **Do I lose my XM functions since XM1 is now for Bluetooth?**
No, you are only losing the presets under XM1. You can still access your Satellite radio through XM2.

For help with any additional issues, please contact tech support at (626)336-3836 Mon-Fri: 9am-5pm PST or e-mail us at info@usaspec.com
Additional troubleshooting Q&As are available at <http://www.usaspec.com/t-faq.aspx>

LIMITED WARRANTY

Thank you for choosing a USA SPEC product. USA SPEC, Inc., is committed to providing high quality defect-free products. All USA SPEC products are tested before leaving the factory and warranted against defects in materials and workmanship for a period of one year to the original owner. The one-year warranty period begins at the date of purchase from an authorized dealer.

PRODUCTS COVERED:

Products and related accessories supplied by USA SPEC, Inc. with the brand name of USA SPEC are covered by this warranty. Only products purchased in the USA are covered.

WARRANTY DOES NOT COVER:

1. Damage due to improper installation or operation, negligence, abuse, or not following instructions, warnings or acceptable industry procedures.
2. Damage caused during the shipment or transportation of the product. All claims of this nature must be presented to the carrier.
3. Damage caused by acts of God, war, or civil disturbance, including without limitation, flood, fire, storms, earthquake or other acts of nature.
4. Any expenses or cost to remove or reinstall products.
5. Any product without the original serial number and factory seal, or has been serviced or modified without the authorization of USA SPEC.
6. Any product not distributed by an authorized USA SPEC dealer.

TO OBTAIN WARRANTY SERVICE:

Contact the Customer Service center for assistance at (626) 336 - 3836. A detailed description of the problem(s) is required for service. Proof of purchase is also required when sending a product for warranty service. If the problem cannot be resolved and the product must be returned for service, you will receive an authorization form from the service center. The product must be delivered pre-paid to the service center. USA SPEC will, at our option, repair the product or replace it with a new or reconditioned product, and if it was shipped to the service center, the return shipping will be pre-paid free of charge provided the repairs are covered by the warranty. The product must be packed securely for shipment to the service center in order to preserve the warranty and prevent damage.

NO IMPLIED WARRANTY, INCLUDING MERCHANTABILITY AND FITNESS FOR USE APPLIES TO THIS PRODUCT AFTER THE ONE YEAR PERIOD AS DEFINED ABOVE, AND NO OTHER EXPRESSED WARRANTY OR GUARANTEE, EXCEPT AS MENTIONED ABOVE, GIVEN BY ANY PERSON, FIRM, OR CORPORATION WITH RESPECT TO THIS PRODUCT SHALL BIND THE WARRANTOR. NEITHER THE WARRANTOR NOR ANY OTHER PERSON, FIRM, OR CORPORATION IS RESPONSIBLE FOR LOSSES OR INCONVENIENCES, OR FOR ANY CONSEQUENTIAL DAMAGES CAUSED BY THE PRODUCT. SOME STATES/PROVINCES DO NOT ALLOW LIMITATIONS ON HOW LONG AN IMPLIED WARRANTY LASTS, AND SOME DO NOT ALLOW THE EXCLUSION OR LIMITATION OF INCIDENTAL OR CONSEQUENTIAL DAMAGES.

This warranty gives you specific legal rights, and you may also have other rights, which vary, from state to state, and province to province. Some of the limitations or exclusions may not apply to you. THE ABOVE WARRANTY TERMS AND CONDITIONS ARE VALID ONLY IN THE U.S.A.

USA·SPEC BT45-VETTE

Bluetooth® Music & Phone Interface for GM with XM



HANDSFREE
PHONE CALL



WIRELESS
MEDIA
STREAMING



USB
CHARGING



ALL SPEAKER
PLAYBACK



2.5 MM
AUX INPUT

MUSIC
INFO
DISPLAY

MUSIC
PLAYBACK
CONTROL

CALLER #
ANNOUNCEMENT
& DISPLAY

Make	Model	Year
Chevrolet	Avalanche	03 - 06
	Corvette Coupe/Convertible	05 - 11
	Equinox	05 - 06
	Impala	00 - 05
	Monte Carlo	00 - 05
	S10 Truck	2004
	Silverado	03 - 06
	Silverado Classic	2007
	SSR	05 - 06
	Suburban	03 - 06
	Tahoe	03 - 06
	Trail Blazer	04 - 09

Make	Model	Year
GMC	Denali	03 - 06
	Envoy	04 - 06
	Sierra	03 - 06
	Sierra Classic	2007
	Yukon	03 - 06
Hummer	H1	04 - 06
	H2/SUT/H3	03 - 07
Cadillac	Escalade/ EXT	03 - 06
	CTS	04 - 07
	RSX	04 - 07

Bluetooth is a registered trademark of Bluetooth SIG, Inc. All other trademarks are the property of their respective owners. ©2008 USA·SPEC Electronics, Inc.

* All radios must have a BAND button and an XM (SAT radio) tuner

* Vehicles WITHOUT XM tuner must use the **BT45-GM15** package

* This above application chart is for general reference only.

Please check www.usaspec.com to verify specific application.

